

Technical data sheet



Product features

Bain marie electric 2x GN 1/1 - 150 without cabinet

Model	SAP Code	0000076
--------------	-----------------	---------



- Drain type: On the front panel
- Drain: Yes
- Safety drain: Yes
- Material: AISI 304 top plate, AISI 430 cladding
- Protection of controls: IPX4
- Maximum device temperature [°C]: 90

SAP Code	0000076	Power electric [kW]	3.000
Net Width [mm]	658	Loading	230 V / 1N - 50 Hz
Net Depth [mm]	609	Number of GN / EN	2
Net Height [mm]	290	GN / EN size in device	GN 1/1
Net Weight [kg]	20.00	GN device depth	150

Technical data sheet



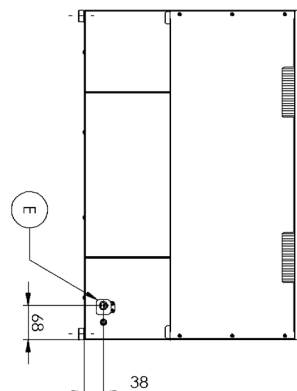
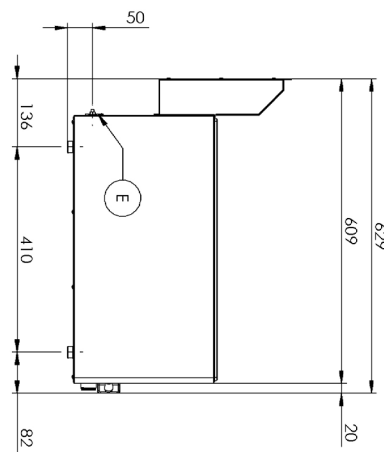
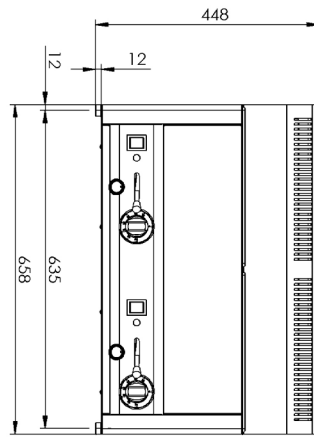
Technical drawing

Bain marie electric 2x GN 1/1 - 150 without cabinet

Model

SAP Code

0000076



Technical data sheet



Product benefits

Bain marie electric 2x GN 1/1 - 150 without cabinet

Model

SAP Code

0000076

1

All-stainless design

long life
resistance of AISI 304 stainless steel material
the material does not cut

- savings on service interventions
- easy cleaning and maintenance of equipment

2

Degree of protection of the control elements IPX4

maintenance-free system
resistance to splash water
long life

- savings on service interventions
- greater job security for staff

3

Manipulation

easy portability

- flexibility in the kitchen, can be used for banquets

Technical data sheet



Technical parameters

Bain marie electric 2x GN 1/1 - 150 without cabinet

Model	SAP Code	00000076
--------------	-----------------	----------

1. SAP Code:

00000076

2. Net Width [mm]:

658

3. Net Depth [mm]:

609

4. Net Height [mm]:

290

5. Net Weight [kg]:

20.00

6. Gross Width [mm]:

725

7. Gross depth [mm]:

710

8. Gross Height [mm]:

540

9. Gross Weight [kg]:

22.00

10. Device type:

Electric unit

11. Construction type of device:

Table top

12. Power electric [kW]:

3.000

13. Loading:

230 V / 1N - 50 Hz

14. Protection of controls:

IPX4

15. Material:

AISI 304 top plate, AISI 430 cladding

16. Indicators:

operation and warm-up

17. Worktop type:

Molded - comfortable cleaning maintenance

18. Worktop material:

AISI 304

19. Worktop Thickness [mm]:

0.80

20. Basin dimensions [mm x mm x mm]:

2x328 x 609 x 290

21. Maximum device temperature [°C]:

90

22. Minimum device temperature [°C]:

30

23. Adjustable feet:

Yes

24. Number of basins:

2

25. Basin material:

AISI 304 - High quality stainless steel

26. Drain type:

On the front panel

27. Drain:

Yes

28. Safety drain:

Yes

Technical data sheet



Technical parameters

Bain marie electric 2x GN 1/1 - 150 without cabinet

Model

SAP Code

0000076

29. Number of GN / EN:

2

32. Heating location:

Under the bottom of the bathtub

30. GN / EN size in device:

GN 1/1

33. Cross-section of conductors CU [mm²]:

0,75

- Výkon (kW): 3,3-3,7 (230 V)

31. GN device depth:

150